

COME TO THE LAUNCH!

Thrussington Neighbourhood Plan

Thrussington
Neighbourhood Plan



COME TO THE LAUNCH!

Thrussington Neighbourhood Plan

1. Why we need a NP
2. The steps
- 3 What next



COME TO THE LAUNCH!

Thrussington Neighbourhood Plan

1. Why we need a NP

Statutory document

Provides a document that the council can use as a future plan for Thrussington.
Proactive rather than reactive

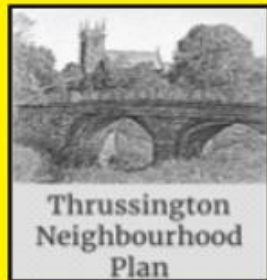
Plan future of village

Identify and protect green spaces and conservation area

Identify areas with potential for controlled development

Identify plans for, for example, car parking and children's recreation areas

Helps to prevent both Charnwood and developers deciding to build without consultation



COME TO THE LAUNCH!

Thrussington Neighbourhood Plan

STRENGTHS

Commitment from village

Commitment from PC

Can set precept for this as PC is a tax raising body

Legal requirement for local council to support

Greater relevance to the community

Community involvement

WEAKNESSES

Time as a resource

Costs



COME TO THE LAUNCH!

Thrussington Neighbourhood Plan

OPPORTUNITIES

Greater control over decisions made about the village

Statutory document

Produce a document before it becomes necessary or mandatory

THREATS

Commitment from village

If not in place Charnwood or developers plans would take precedence



COME TO THE LAUNCH!

Thrussington Neighbourhood Plan

2. The steps

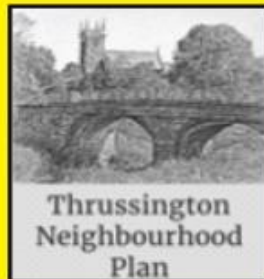
1 Getting started

- Agree need for plan
- Discuss with Charnwood
- Produce plan with costings and apply for grants

2 Neighbourhood area

- Determine area
- Submit proposal
- LPA consults- 6 weeks
- LPA approval 27/4/16

COMPLETED



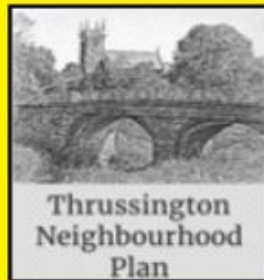
COME TO THE LAUNCH!

Thrussington Neighbourhood Plan

2. The steps

3 Engagement with parish residents and stakeholders.

(Stakeholders include mandatory stakeholders such as Charnwood Borough Council, English Heritage, The Environment Agency and so on. Other stakeholders include local businesses, schools, landlords etc.)



COME TO THE LAUNCH!

Thrussington Neighbourhood Plan

2. The steps

4 Draft plan

Policies, proposals, site allocations

Consider sustainability, diversity, equality, delivery

5 Consultation

Consultation on plan – 6 weeks min



COME TO THE LAUNCH!

Thrussington Neighbourhood Plan

2. The steps

6 Revisions

7 Submission

Submit to LPA

LPA publicises - min. 25 working days

LPA appointed examiner

Examination

Report



COME TO THE LAUNCH!

Thrussington Neighbourhood Plan

2. The steps

8 Referendum

Publicise referendum

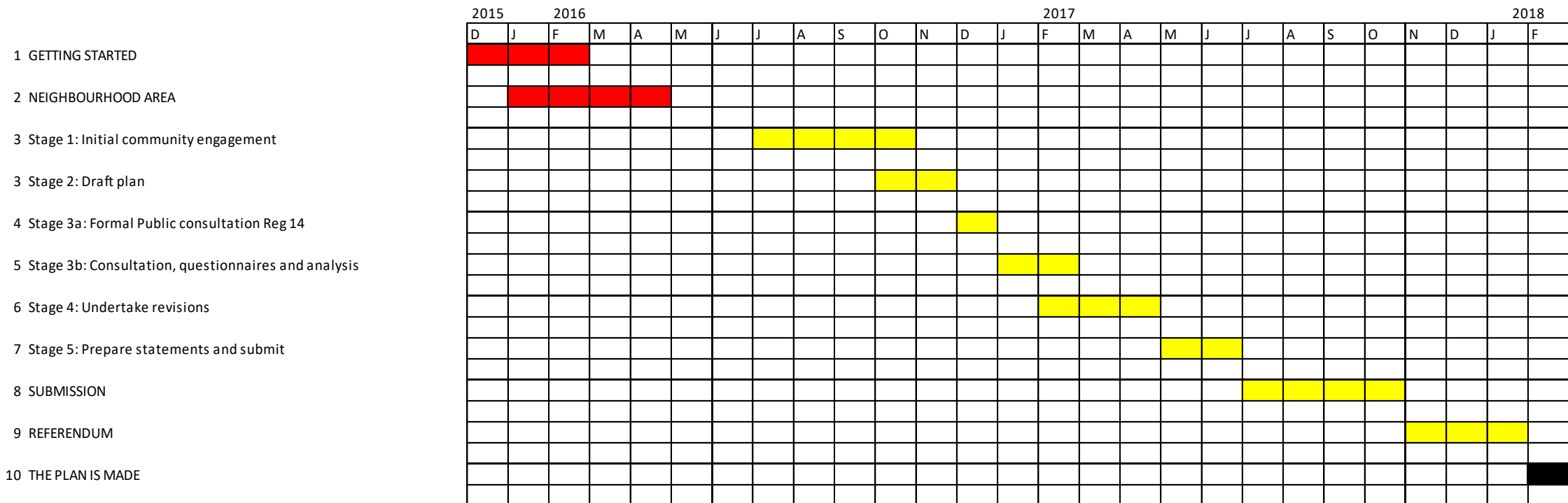
Referendum

9 The plan is made



COME TO THE LAUNCH!

Thrussington Neighbourhood Plan

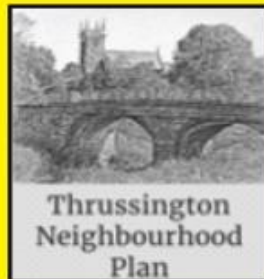


COME TO THE LAUNCH!

Thrussington Neighbourhood Plan

3. What next

- 1 Working party set up ✓
- 2 Parish designated as Neighbourhood area ✓
- 3 Identified consultant as working partner ✓
4. Apply for funding
5. Request for help – volunteers etc
6. Engagement with parish residents and stakeholders and the collation and compilation of evidence base



COME TO THE LAUNCH!

Thrussington Neighbourhood Plan

Can you help?

If you would like to get involved with the Neighbourhood Plan and can spare some time, please contact the working group at thrussingtonparishplan@gmail.com. We are looking for a people to join the working group but also help with distributing leaflets, web design, photography and many other aspects of putting the plan together. We would welcome any help that you can offer even if it is a few hours.

