

Footpath 5 & 6: Regent Street –Wreake House Farm – (Parish boundary) – Church Lane, Hoby – Main Street, Hoby – Hoby Road - The Green — Regent Street

(Footpath 6 goes to Ragdale or Ragdale Hall and then back to Hoby – numerous choices but all in Hoby and Rotherby Parish)

Date: 27<sup>th</sup> May, 2017

Duration: Not timed Walked by: M Thistlethwaite

Comments:

1. Footpaths clearly marked throughout. However, footpath through some fields were difficult to see due to recent planting.



2. Footpath through Regent St, Wreake House Farm to Parish Boundary clear and easy to follow. Wreake House Farm paddocks may have horses – take care.

Some good views across valleys...

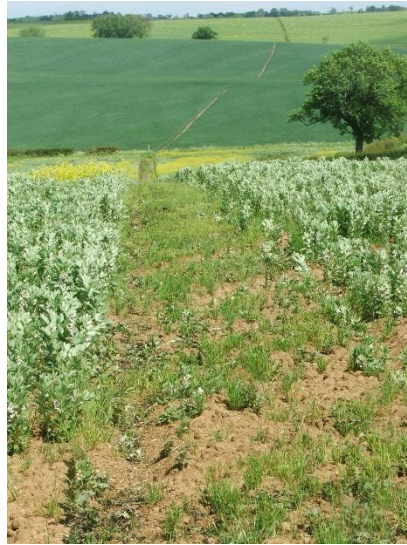
Towards Thrusington



Towards Old Gate Road



3. At Parish boundary footpath signs are clear but need to take care when going to Hoby as you can only see footpath marker from bottom of hill. If going to Ragdale walk straight on. There are many footpath routes around Ragdale and many can take you back to Hoby.



4. Follow signs to Hoby, should emerge on Church Lane. Follow Church lane to Main Street and walk towards Church. Around the corner can follow Brooksby Road and come across two or three footpath routes back to Thrussington. However, I walked back the way I came.